

**HIV Lifeline**

**F.L.A.S.H.**

Name \_\_\_\_\_

Period \_\_\_\_\_

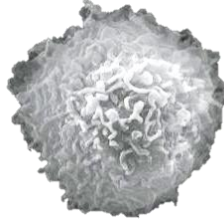
**#1 What Does HIV stand for?**

H \_\_\_\_\_

I \_\_\_\_\_

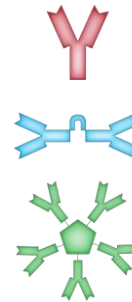
V \_\_\_\_\_

**#2 Two Key Parts of the Immune System**



A \_\_\_\_\_ is a type of white blood cell, the boss of the immune system, which HIV attacks.

An \_\_\_\_\_ is one of the fighters of the immune system. It marks attaches to foreign bodies so the rest of immune system can recognize it.



**#3 Four Fluids can cause HIV**

1. \_\_\_\_\_

2. \_\_\_\_\_

3. \_\_\_\_\_

4. \_\_\_\_\_

**#4 Which fluids are safe?**

1. \_\_\_\_\_

2. \_\_\_\_\_

3. \_\_\_\_\_

4. \_\_\_\_\_

**#5 Three most frequent ways to get infected:**

1. \_\_\_\_\_

2. \_\_\_\_\_

3. \_\_\_\_\_

Rare Ways to get infected by HIV are:

\_\_\_\_\_ & \_\_\_\_\_

**#6. What is the “Window Period?”**

The time period between a person’s \_\_\_\_\_ & \_\_\_\_\_ with HIV when antibodies are detectable in the body.

- After \_\_\_\_\_ there are usually enough antibodies to show on an AIDS test.

- Nearly all people \_\_\_\_\_ develop antibodies by \_\_\_\_\_ months.

<p><b>#7 HIV and the Immune System</b></p> <p>7. A person can be _____ infected and not have _____ if the person's _____ is intact.</p> <p>Often this period is from _____ years.</p> <p><i>Has no symptoms, person is a _____.</i></p>	<p><b>#8 HIV and the Immune System</b></p> <p>8. After this period, the _____ begins to lose the fight.</p> <p><i>At this point the person has _____</i></p> <p><b>9. What does AIDS stand for?</b></p> <p>A. _____</p> <p>I. _____</p> <p>D. _____</p> <p>S. _____</p>	<p><b>10. What happens to someone with fully involved AIDS?</b></p> <p>Cause of death - a variety of normally _____ diseases. Some are:</p> <p>a. _____</p> <p>b. _____</p> <p>c. _____</p> <p>d. _____</p> <p>e. _____</p>
<p><b>11. Treatment of AIDS &amp; Life Expectancy</b></p> <p>Treatment helps people _____</p> <p>a. In 1993 = _____</p> <p>b. In 2006 = _____</p> <p>....if properly treated</p> <p>c. _____ are the cause of the increase</p>	<p><b>12. What are the problems with Treatment?</b></p> <p>a. Have to take _____</p> <p>b. Pills can make people _____</p> <p>c. Pills don't _____</p> <p>d. Pills _____</p> <p>2010 avg cost est. = \$ _____ / 20+ yrs</p> <p>or \$ _____ / month</p> <p>Advanced cases = \$ _____ / month</p>	<p><b>13. Let's Rewind!</b></p> <p><b><u>Brainstorm respectfully:</u></b></p> <p><i>What are 3 ways <u>you</u> can think of to keep a person safe from HIV/AIDS???</i></p> <p><b>14. How to keep safe?</b></p> <p>1. _____</p> <p>2. _____</p> <p>3. _____</p>

**HIV Lifeline**

**F.L.A.S.H.**

Name \_\_\_\_\_

Period \_\_\_\_\_